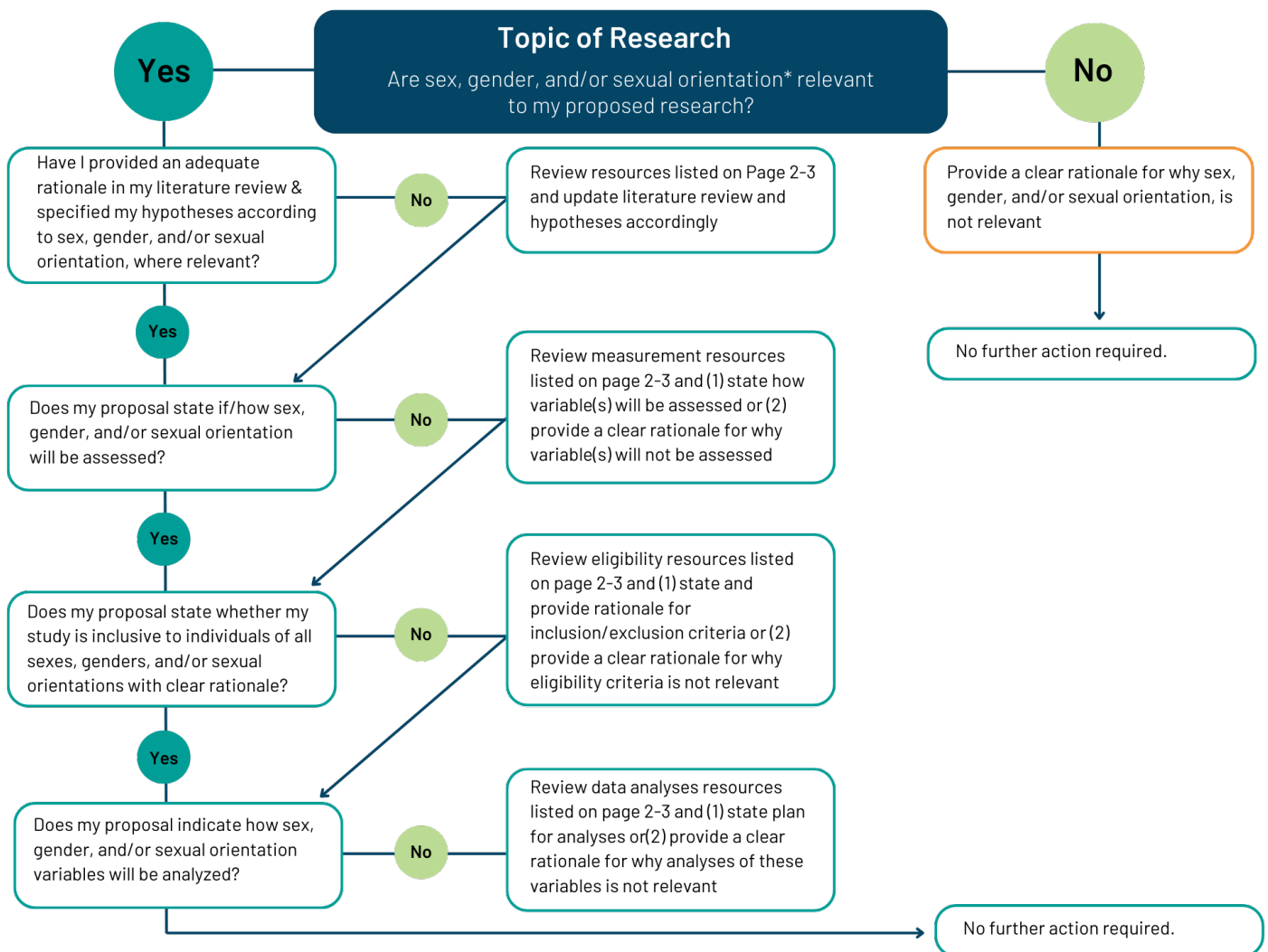


GENDER AND SEX CONSIDERATIONS IN RESEARCH

FLOWCHART

This flowchart was designed to guide individuals preparing data request proposals as well as grant and trainee support applications to ensure they have adequately addressed sex and gender considerations in their submission.



****Variables related to sex, gender, and sexual orientation are distinct and may differ in their relevance to your proposal. We present these variables together in each step; however, please follow this flowchart for each category (i.e., sex, gender, and sexual orientation, separately) to ensure you have addressed these variables in your proposal.***

RESOURCES

Below are resources related to sex and gender and their integration in the research process. If you are unsure which resource/s are most relevant to your needs, please feel free to contact info@mssu.ca for guidance. We are here to help!

Please be aware that there are sources you may come across online that appear reputable but spread harmful misinformation related to sex and gender diversity and rights. The misrepresentation, misuse, and mismeasurement of gender and sex concepts can perpetuate stereotypes and contribute to the exclusion of marginalized and minoritized participants and communities.

It is critical to learn from trusted sources. The resources provided here have been carefully reviewed for accuracy and appropriateness of information.

DEFINITIONS

Sex: A set of biological attributes (e.g., anatomy, chromosomes, etc.)

Gender: Socially constructed roles, behaviors, expressions, and identities (e.g., women, non-binary people, agender people, etc.)

Sexual orientation: Description of emotional, romantic, or sexual attraction (e.g., lesbian, heterosexual, gay, asexual, etc.)

Note: Sex and gender are neither dichotomous nor independent: biological and sociocultural factors have a mutual influence on the experience and expression of gender/sex.

KEY CONCEPTS



Intro to Gender Diversity: Offered through Trans Care BC, this 30-minute online course introduces key terms and concepts, along with basic strategies for creating welcoming and accessible gender-affirming spaces.

Queering Identities – LGBTQ+ Sexuality and Gender Identity: Offered by the University of Colorado, this 20-hour course covers the history of LGBTQ identities, experiences, and activism. Learners can complete subsections based on interest, including a module on LGBTQ+ terminology and key concepts.

Beyond the Binary: Practical guidance to help health researchers and institutions promote gender equity in health research for women, trans, and non-binary people.



ELIGIBILITY/ INCLUSIONARY CRITERIA

Gender & Sex in Methods & Measurement Research Equity: Determining and Communicating Eligibility:

This guide emphasizes establishing and conveying eligibility criteria in ways that respect and reflect the experiences of individuals from marginalized and minoritized sexes and genders, including intersex, trans, non-binary, and Two-Spirit communities. It features decision-making tools to help researchers design eligibility criteria that are precise, clearly articulated, and genuinely inclusive.

MEASUREMENT



Asking About & Measuring Participants' Genders & Sexes:

This tool helps researchers understand whether, when and how to ask participants about their genders & sexes. There is no single, correct way to measure people's genders and sexes, in part because these terms have multiple meanings.

RESOURCES

Sexual Orientation and Gender Identity (SO/GI) Data

Collection Demonstration Videos: Developed by the National LGBTQIA+ Health Education Center in partnership with New York City Health + Hospitals, this video-series demonstrates best practices in sexual orientation and gender identity data collection.

Sex and Gender in Biomedical Research: This is 1 of 3 training modules developed by CIHR to guide the integration of sex and gender in health research. This module (i.e., course 1) is intended for individuals conducting basic science research that involves experiments with cells, tissues, animals or other biological samples.

DATA ANALYSIS



Gender & Sex in Methods & Measurement Research

Equity: Sampling Plans & Data Analyses: This tool provides researchers with key considerations regarding sampling in relation to gender, sex, and sexuality. It includes guiding questions, critical issues to reflect on, and illustrative example scenarios.

Sex and Gender in the Analysis of Secondary Data from Human Participants (Course 3): This training module is intended for those conducting secondary data analyses. Complete this module if your research involves the biostatistical analysis of existing datasets with human participants.

NOTE: Find all Gender & Sex in Methods & Measurement Toolkits on the [CGSHE website](https://cgshe.ca/practice/research-toolkits/gender-and-sex-toolkit/) (<https://cgshe.ca/practice/research-toolkits/gender-and-sex-toolkit/>).

ACKNOWLEDGEMENTS

This resource was developed by the MSSU Sex and Gender Team for the Maritime SPOR SUPPORT Unit.

TEAM MEMBERS

- Natalie O. Rosen, Professor, Dalhousie University
- Jackie Huberman, MSSU Postdoctoral Fellow, Dalhousie University
- Amond McKenna, Patient/Public Partner
- Jocelyn Adams, Patient/Public Partner, Gender Affirming Care PEI
- Em Jun Eng Mittertreiner, MSSU PhD Student, University of New Brunswick

Last update: December 12, 2024