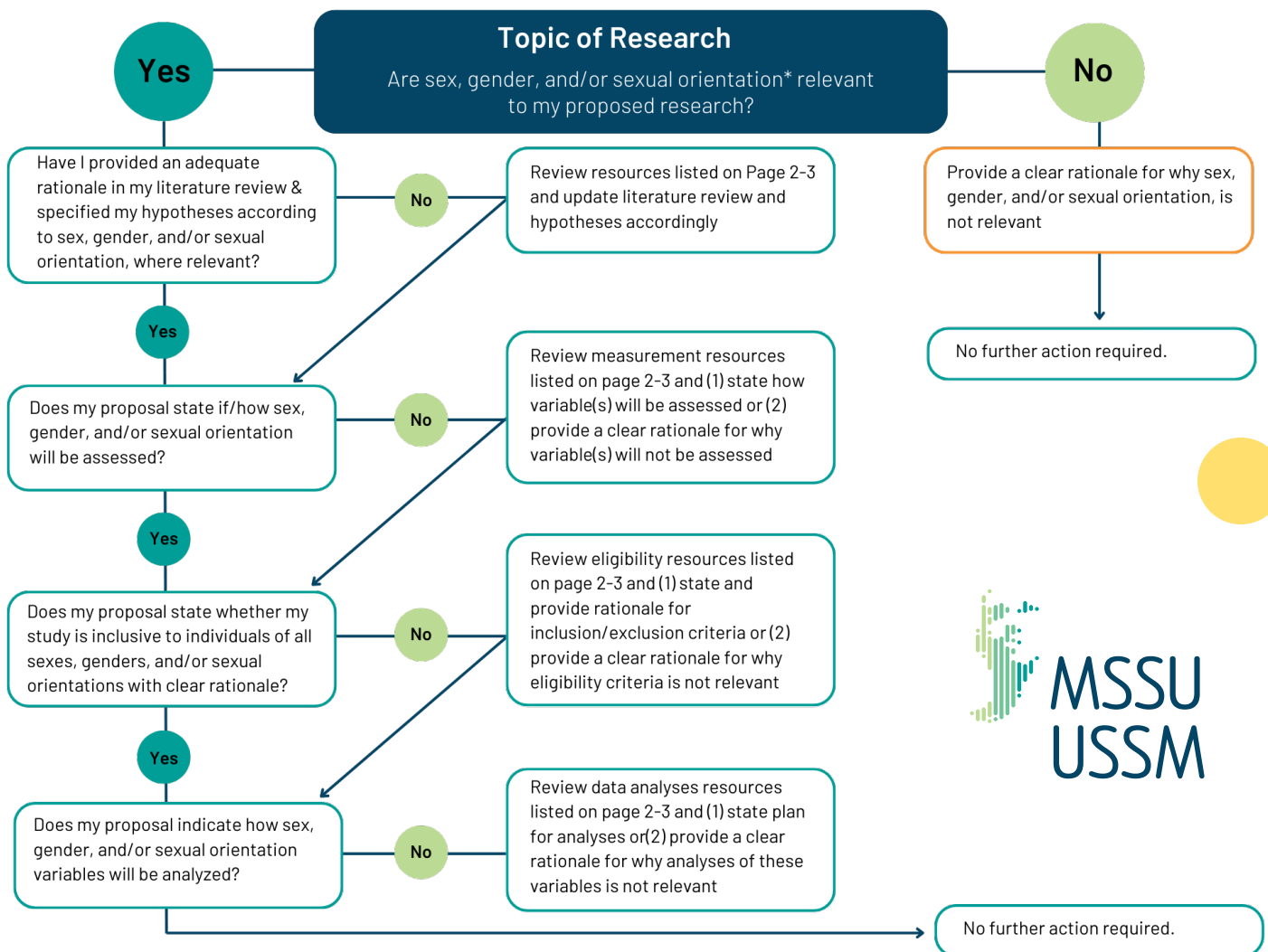


GENDER AND SEX CONSIDERATIONS IN RESEARCH

FLOWCHART

This flowchart was designed to guide individuals preparing data request proposals as well as grant and trainee support applications to ensure they have adequately addressed sex and gender considerations in their submission.



****Variables related to sex, gender, and sexual orientation are distinct and may differ in their relevance to your proposal. We present these variables together in each step; however, please follow this flowchart for each category (i.e., sex, gender, and sexual orientation, separately) to ensure you have addressed these variables in your proposal.***

RESOURCES

In the next section, you will find brief descriptions and links to resources related to Key Concepts, Eligibility Criteria, Measurement, and Data Analysis.

DEFINITIONS

Sex: A set of biological attributes (e.g., anatomy, chromosomes, etc.)

Gender: Socially constructed roles, behaviors, expressions, and identities (e.g., women, non-binary people, agender people, etc.)

Sexual orientation: Description of emotional, romantic, or sexual attraction (e.g., lesbian, heterosexual, gay, asexual, etc.)

Note: Sex and gender are neither dichotomous nor independent: biological and sociocultural factors have a mutual influence on the experience and expression of gender/sex.

KEY CONCEPTS



Intro to Gender Diversity: Offered through Trans Care BC, this 30-minute online course introduces key terms and concepts, along with basic strategies for creating welcoming and accessible gender-affirming spaces.

Queering Identities – LGBTQ+ Sexuality and Gender Identity: Offered by the University of Colorado, this 20-hour course covers the history of LGBTQ identities, experiences, and activism. Learners can complete subsections based on interest, including a module on LGBTQ+ terminology and key concepts.

ELIGIBILITY/ INCLUSIONARY CRITERIA



Gender & Sex in Methods & Measurement Research Equity: Determining and Communicating Eligibility: Developed by the Centre for Gender and Sexual Health Equity with support from CIHR, this guide is focused on determining and communicating

eligibility criteria in ways that are attentive to the lives of people of marginalized and minoritized sexes and genders, which includes but is not limited to intersex, trans, non-binary and Two-Spirit people. This resource contains decision guides to help researchers think through what precise, clearly communicated and meaningfully inclusive eligibility criteria can look like.



MEASUREMENT

Asking About & Measuring Participants' Genders & Sexes:

This tool helps researchers understand whether, when and how to ask participants about their genders & sexes. There is no single, correct way to measure people's genders and sexes, in part because these terms have multiple meanings.

Sexual Orientation and Gender Identity (SO/GI)

Data Collection Demonstration Videos: Developed by the National LGBTQIA+ Health Education Center in partnership with New York City Health + Hospitals, this video-series demonstrates best practices in sexual orientation and gender identity data collection.

Sex and Gender in Biomedical Research: This is 1 of 3 training modules developed by CIHR to guide the integration of sex and gender in health research. This module (i.e., course 1) is intended for individuals conducting basic science research that involves experiments with cells, tissues, animals or other biological samples.

DATA ANALYSIS



Gender & Sex in Methods & Measurement Research

Equity: Sampling Plans & Data Analyses: There are several points to consider about sampling in relationship to gender, sex, and sexuality. This tool offers questions for researchers to ask themselves, issues to carefully consider, and some illustrative example situations.

RESOURCES

Sex and Gender in the Analysis of Secondary Data from Human Participants (Course 3): This training module is intended for those conducting secondary data analyses. Complete this module if your research involves the biostatistical analysis of existing datasets with human participants.

Sex Specific Analyses & Reporting in Clinical Trials:

This e-module includes the following learning objectives: how to appraise results of sex-specific clinical trial data; what to consider when designing, interpreting and reporting data; why clinical trials should report all relevant outcomes by sex (even if there aren't differences between sexes).

HYPERLINK REFERENCE

1. <http://www.phsa.ca/transcarebc/health-professionals/education/trans-intro>
2. <https://www.coursera.org/learn/queeringidentities>
3. <https://cgshe.ca/app/uploads/2022/01/GSMM-Research-Equity-Tool-1.pdf>
4. <https://cgshe.ca/app/uploads/2022/10/GSMM-Research-Equity-Tool-4.pdf>
5. <https://www.lgbtqihealtheducation.org/courses/so-gi-data-collection-training/>
6. <https://cihr-irsc.gc.ca/e/49347.html>
7. <https://cgshe.ca/app/uploads/2022/06/GSMM-Research-Equity-Tool-3.pdf>
8. <https://cihr-irsc.gc.ca/e/49347.html>
9. http://womensxchange.womensresearch.ca/assets/emodules/SexSpecific/story_html5.html

ACKNOWLEDGEMENTS

This resource was developed by the MSSU Sex and Gender Team for the Maritime SPOR SUPPORT Unit.

TEAM MEMBERS

- Natalie O. Rosen, Professor, Dalhousie University
- Jackie Huberman, MSSU Postdoctoral Fellow, Dalhousie University
- Justin Dubé, MSSU Doctoral Candidate, Dalhousie University
- Amond McKenna, Patient/Public Partner
- Jocelyn Adams, Patient/Public Partner, Gender Affirming Care PEI